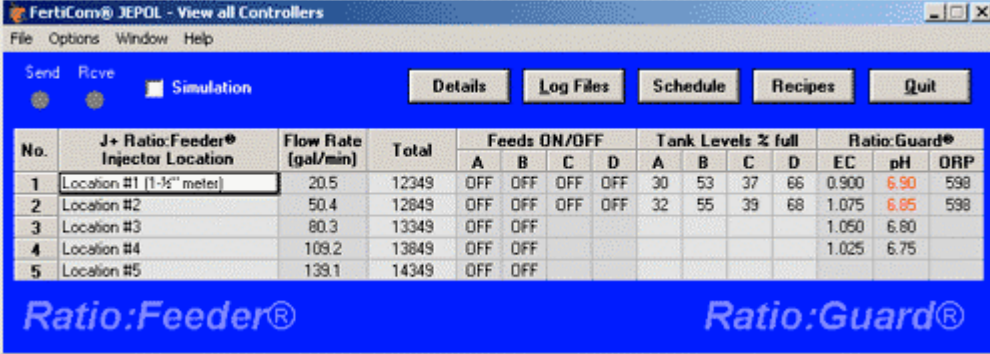


From H.E. Anderson Co.

FertiCom® JEPOL

Software for *Ratio:Feeder®* J Plus Injector Systems



The screenshot shows the 'View all Controllers' window of the FertiCom® JEPOL software. The window has a menu bar (File, Options, Window, Help) and a toolbar with buttons for Send, Rcvr, Simulation, Details, Log Files, Schedule, Recipes, and Quit. Below the toolbar is a table with the following data:

No.	J+ Ratio:Feeder® Injector Location	Flow Rate [gal/min]	Total	Feeds ON/OFF				Tank Levels % full				Ratio:Guard®		
				A	B	C	D	A	B	C	D	EC	pH	ORP
1	Location #1 (1-1/2" meter)	20.5	12349	OFF	OFF	OFF	OFF	30	53	37	66	0.900	6.90	598
2	Location #2	50.4	12849	OFF	OFF	OFF	OFF	32	55	39	68	1.075	6.85	598
3	Location #3	80.3	13349	OFF	OFF							1.050	6.80	
4	Location #4	109.2	13849	OFF	OFF							1.025	6.75	
5	Location #5	139.1	14349	OFF	OFF									

The bottom of the window features the logos for Ratio:Feeder® and Ratio:Guard®.

Figure 1 - Showing basic data for all controllers at a glance

Features:

1. Remotely control and monitor from your PC compatible computer up to 16 ea. of J Plus injectors, P-1 pH monitors, E-1 EC monitors., O-1 ORP (oxidation reduction potential) monitors, & L-1 solution tank level monitors.
2. Monitors flow rate, total flow, EC and pH values & alarm conditions.
3. Tank level monitors monitor and alarm up to 4 solution tank levels at each location. Can shut off feed before tanks run completely dry to prevent losing pump prime.
4. Pop-up window tells you of any alarm condition.
5. You can conveniently set feed rates by setting up feed recipes.
6. Recipes may include up to four separate solutions, each individually controlled.
7. Easily change recipes according to a time schedule.
8. Unlimited number of recipes and scheduled recipe changes.
9. Data logging feature allows you to log, view, and print operating parameters individually for each location.
10. Configuration window makes it easy to configure injectors and monitors.
11. Built in solution calculator for easy calculation of concentrate solutions.
12. You can lock-out the capability to change pH, EC, and ORP alarm setpoints in the field at the controllers.
14. Injectors and controllers are fully functional if the computer goes down or is off-line. Only the ability to change recipes is lost.
13. Choice of optically isolated USB or RS-232 serial port computer connection.
14. Can also be used with wireless links (depending on terrain and other factors).

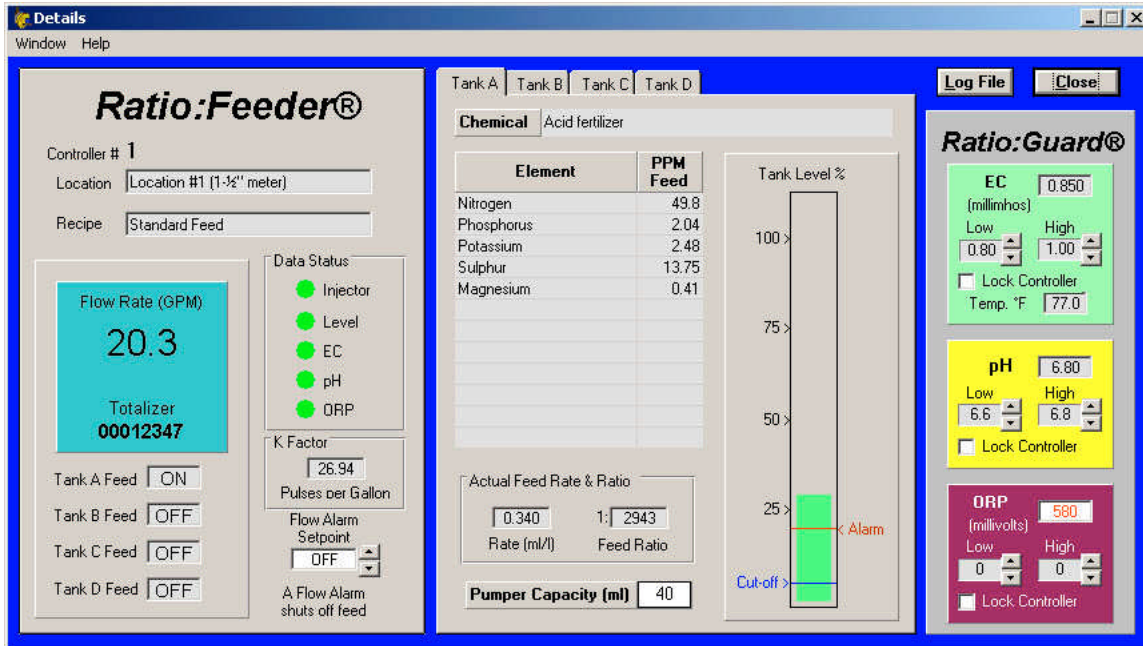


Figure 2 - See full details of each location

15. Has simulation mode to allow you to set up your solution data, injector data, recipes, and feed schedules off line.
16. On-line Help serves as complete set-up and operating manual.

System Requirements:

- Windows® 98 or later operating system
- XVGA (1024x768) minimum display resolution
- USB port or RS-232 Serial port
- 256 MB system memory
- 25 MB hard disk space