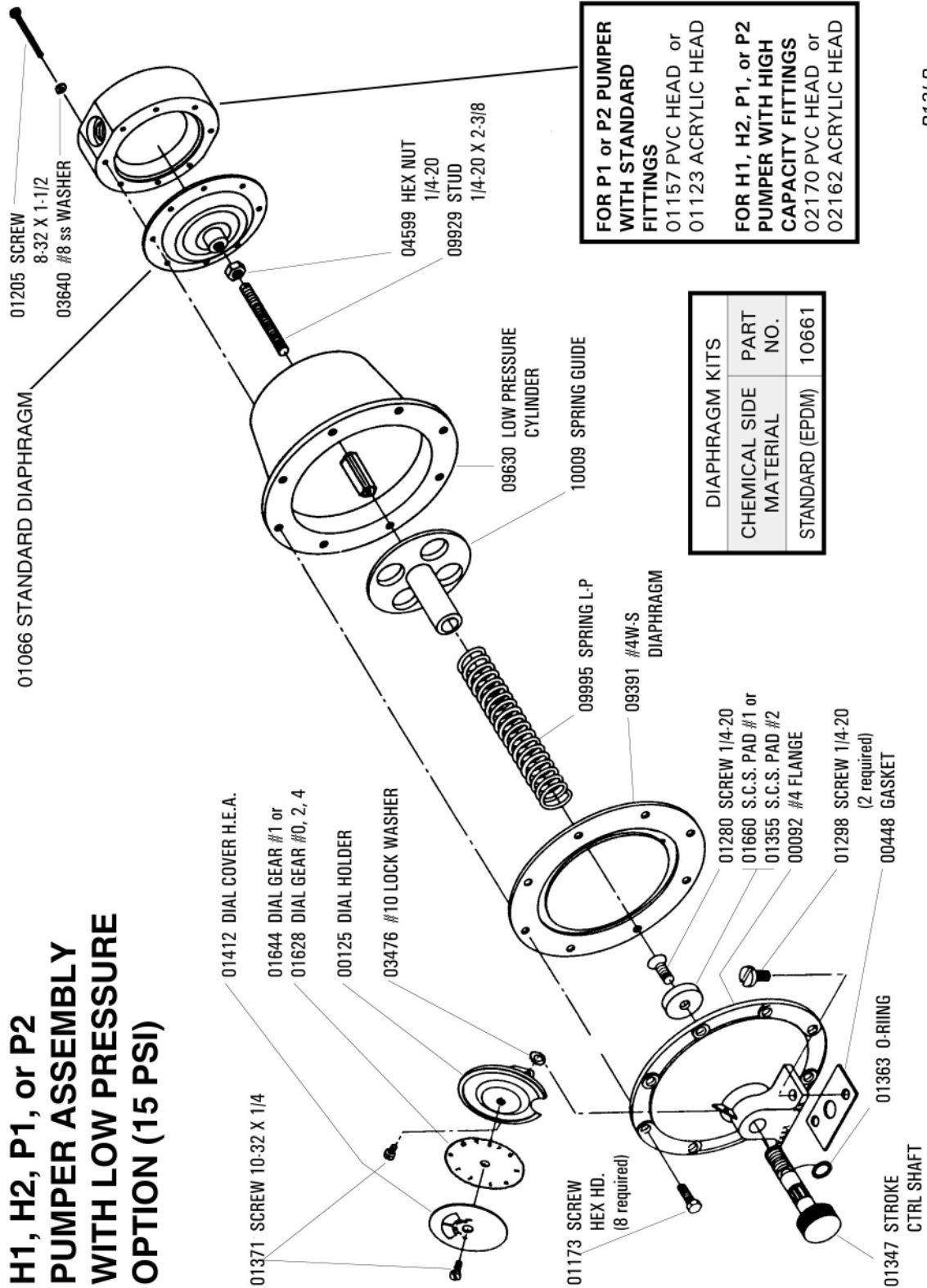


**H1, H2, P1, or P2  
PUMPER ASSEMBLY  
WITH LOW PRESSURE  
OPTION (15 PSI)**



**FOR P1 or P2 PUMPER  
WITH STANDARD  
FITTINGS**  
01157 PVC HEAD or  
01123 ACRYLIC HEAD

**FOR H1, H2, P1, or P2  
PUMPER WITH HIGH  
CAPACITY FITTINGS**  
02170 PVC HEAD or  
02162 ACRYLIC HEAD

DIAPHRAGM KITS	
CHEMICAL SIDE MATERIAL	PART NO.
STANDARD (EPDM)	10661

P12LP