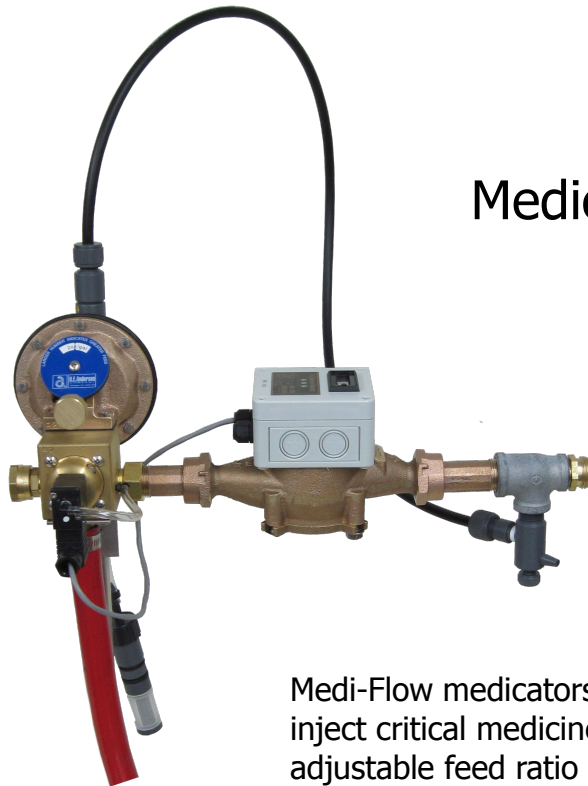
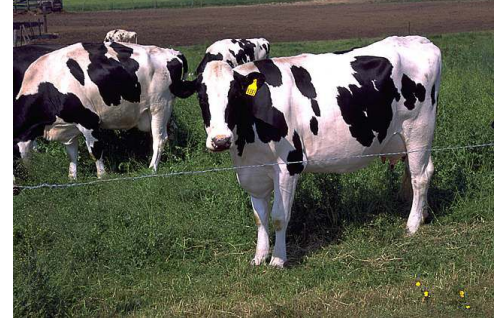
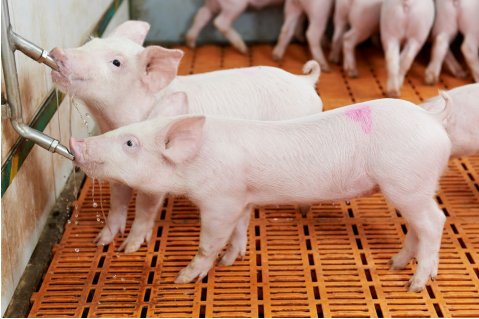




# H.E. Anderson Company



## Medi-Flow™

Medicators and Chemical Injectors  
For Livestock

Medi-Flow medicators are the most accurate and reliable method to inject critical medicines, sanitizers and nutrients. This unit features an adjustable feed ratio which is maintained across a broad flow range. Units feature time tested diaphragm pumps and precision water meters resulting in extremely low pressure loss.

Please call or email with any questions.

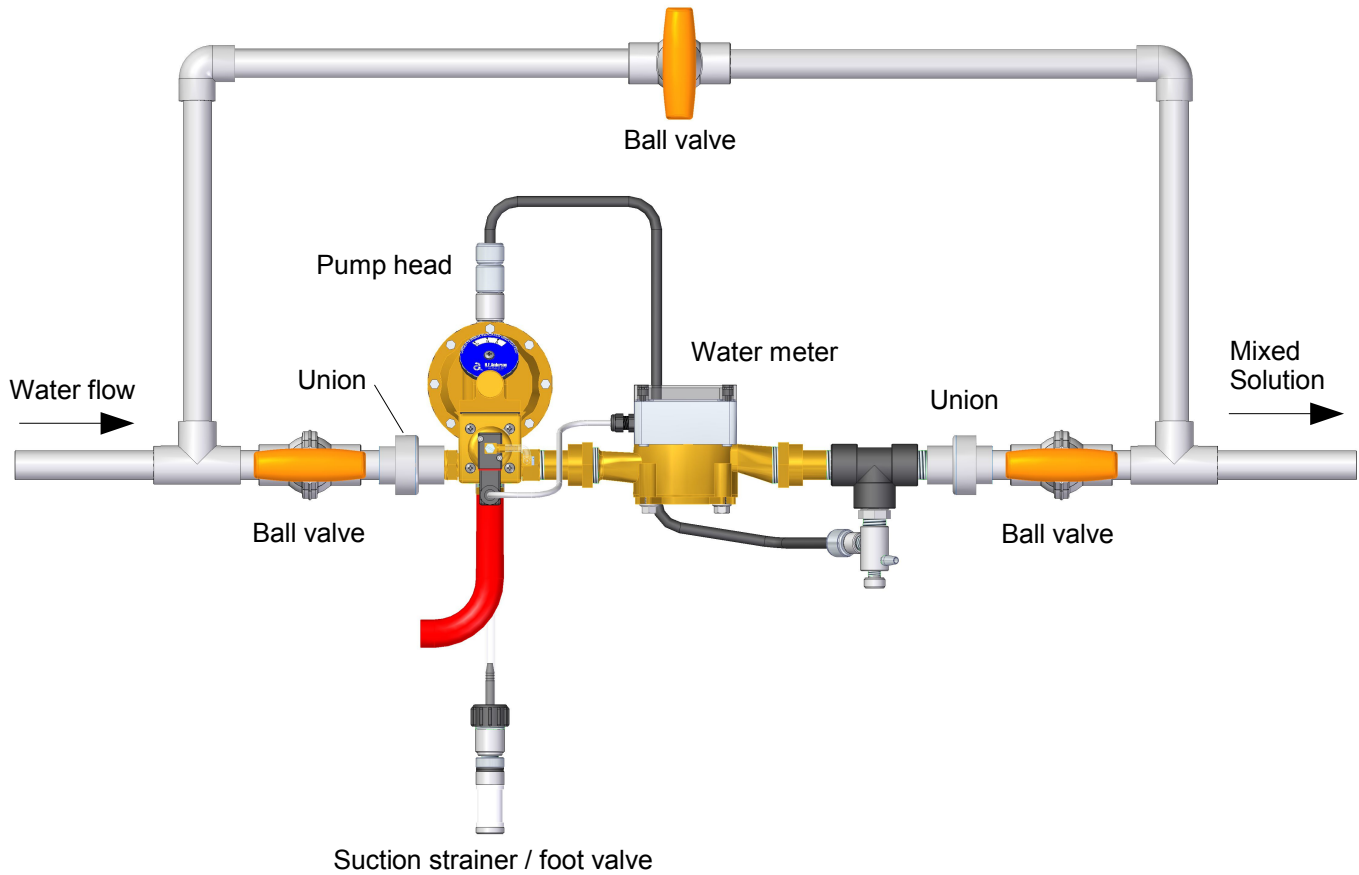
Randy Nester – HEA Sales  
[randy@heanderson.com](mailto:randy@heanderson.com)

Bruce Walters – HEA Sales  
[bruce@heanderson.com](mailto:bruce@heanderson.com)



**H.E. Anderson**  
COMPANY  
[www.heanderson.com](http://www.heanderson.com)  
Phone 1-800-331-9620

## Typical Installation



### Features

- Easy installation and operation
- Extremely accurate injection
- No sliding seals, accuracy does not degrade over time
- Positive displacement and volume proportioning
- Adjustable feed rate without recalibration
- Filter not required
- Injector can be powered with a battery
- On / off button
- Models ending in 'D' come with water flow totalizer
- 15 month warranty

### Specifications

Model	M101 & M101D	M202 & M202D
Injection Rate	2 to ½ oz/gal.	1 to ¼ oz/gal.
Maximum Flow	15 GPM	40 GPM
Minimum Flow	1/4 GPM	3/4 GPM
Operating Pressure	30 psi to 125 psi	
Water Temp	33° to 140° F	
Power Required	12 VDC or 120 VAC	
Feeds 1 solution at specified adjustable ratio		

Please call or email with any questions.

Randy Nester – HEA Sales  
[randy@heanderson.com](mailto:randy@heanderson.com)

Bruce Walters – HEA Sales  
[bruce@heanderson.com](mailto:bruce@heanderson.com)



**H.E. Anderson**  
 COMPANY  
[www.heanderson.com](http://www.heanderson.com)  
 Phone 1-800-331-9620