



## UNPACKING

Please open and inspect your package upon receipt. Your package was packed with great care and all the necessary packing materials to arrive to you undamaged. If you do find an item that is broken or damaged, you must contact the delivering carrier to report the claim.

## Medi-Flow™

### Model M101 & M101D Medicator Instructions

### GETTING TECHNICAL ASSISTANCE

**The H.E. Anderson Company** is dedicated to assisting our customers with installation and use of our products. Our technical staff are available each weekday from 8:30am to 4:30pm central time. You may call us toll free at **1-800-331-9620** from anywhere in the U.S.A. and Canada. If no one is available, we will promptly return your call.

**Before you call**, we suggest that you review this manual. You may find the answer to your question here. But even if you do not, reviewing the manual will help us to help you.

**There is some information** you should have available when you call. You should know the model and serial number of your control unit. Also, you should note the number of pumpers of each type, and their model numbers (found under the adjustment knob, stamped into the casting). We may not need all this information, but having it available at the start can sometimes save a lot of time and trouble for you.

If you need an additional owners manual for any H.E. Anderson Company product, please visit our website at <http://heanderson.com/manuals.php>

Record the information from your control panel below: (See photo on page 3)

Model # \_\_\_\_\_ Serial # \_\_\_\_\_



You should have received the following with your unit:

- Medicator (assembled less chemical fittings).
- Suction Valve #06742.
- Discharge Valve #02857.
- Foot Valve/Bulkhead/Flush Fitting #13334.
- Priming Injector #03830
- 3' Piece of Black Tubing, 3/8".
- 10' Piece of Clear Tubing, 3/8".
- 5' Piece of Red Hose, 3/4".
- This Owners Manual.

If there are missing parts, please call your distributor.

## Installation

The medicator comes with the 12VDC plug-in power supply attached. You will need a 120 VAC electrical outlet close to your unit. We recommend using a power surge protector to help prevent electrical surges from damaging the medicator. **Damage from power surges, including lightning strikes, is not covered by our warranty.**

The medicator has standard hose connections on the inlet and outlet. You may remove these to install the unit with standard 1/2" NPT plumbing.



**Double check the direction of water flow when you install your medicator.**

If permanently installed, the medicator should be installed in a bypass. This will allow servicing without shutting off the water.



**The chemical check valves have a yellow arrow stamped on them. These arrows must point up when installed.**

Install the chemical fittings:

- Install the suction valve (the shorter of the two chemical valves) into the bottom of the plastic pump head. *Hand tighten only. Be very careful when removing the tape which retains the ceramic ball poppet! The ball is easily lost.*
- Install the discharge valve into the top of the plastic pump head.

- Wrap the threads of the priming injector with Teflon® tape and install it hand tight into the bottom of the 1/2" galvanized tee.
- Refer to the photo on the front page of this manual. Connect one end of the black tubing to the discharge valve. Unscrew the knurled plastic nut and push the tubing through the center hole. Push the tube onto the tapered inlet and secure hand tight with the nut. likewise connect the other end to the priming injector.



**Never use the clear tubing on the discharge side. It is not rated for high pressures!**

- Connect one end of the clear plastic tubing to the suction valve.
- Connect the other end of the tubing to the Foot Valve/Bulkhead/Flush Fitting. This fitting can be dropped into the chemical tank from the top or installed through the side of a tank as a bulkhead fitting. Either way it should be placed just off the bottom of the tank if there is any possibility of sediment collecting in the tank. See the specific **Foot Valve/Flush Fitting Instructions** on page ?? of this manual for more information.
- Connect the 3/4" red hose to the hosebarb on the pilot valve. There will be water discharged from this hose during the pumping cycle. The volume discharged will be approximately three times that of chemical pumped. The discharge water is clear untreated water. **This hose must drain to atmosphere and should not be elevated or restricted.**

## System Check

- Apply power to your medicator.
- Watch the lighted indicators located in the cover.
- The power light (red) should be on constantly.



The medicator panel. The model & serial numbers are located just below the panel.

- The flow light(yellow) should flash when there is water flowing.
- The cycle light(green) flashes when the medicator makes a pumping cycle (depending on the volume of water flow, it may take several seconds for this light to flash).
- If the lights are not operating correctly, immediately unplug the unit and call your distributor or H.E. Anderson Co. to report the problem.

### Optional Flow Totalizer

The flow totalizer (optional) is a resettable counter for accumulating the water flow and is equipped with a 10 year battery to retain memory. The meter will accumulate flow even if injection is turned off.

### The PRIME ON/OFF Switch

This button (see photo above) allows you to turn off the injection of chemical, but still record the flow if you have the optional counter/totalizer.

- **To turn the injection OFF**, press the button. Injection will stop.
- **To turn the injection ON**, press the button. The valve light will flash and the medicator will make the first pumping stroke.
- **When priming the medicator**, you can make repetitive pumping strokes by pressing the PRIME ON/OFF switch OFF and ON. **Be sure to leave the unit on after priming!**

**NOTE: Priming is quicker and easier at the maximum dial setting of 2 oz./gal. Your unit was shipped from the factory set to the maximum setting.**



**You must have at least 30 psi of pressure on the outlet side of the medicator for the system to operate properly.**

### Setting the Feed Rate

The feed rate is calibrated in oz. per gallon. Simply set the dial to the desired feed rate.

**NOTE: It is easier to turn the knob to decrease the feed rate when the unit is making a pumping stroke (When the green light is on).**

Once your medicator is set, it is fully operational.

### Maintenance & Storage

#### Servicing the Pumper

Your medicator normally requires very little maintenance.

For servicing and calibrating your pumper and chemical valves, refer to the separate pumper and pumper calibration manual, *STANDARD PUMPER INSTRUCTIONS*, supplied with your unit.

Your medicator is equipped with a type AS (Anderson) pilot valve. For pilot valve problems refer to the separate *Pilot Valve and Manifold Instructions*.

If you are unable to locate the manuals, they are all available on our website at <http://heanderson.com/manuals.php>.

#### Storage



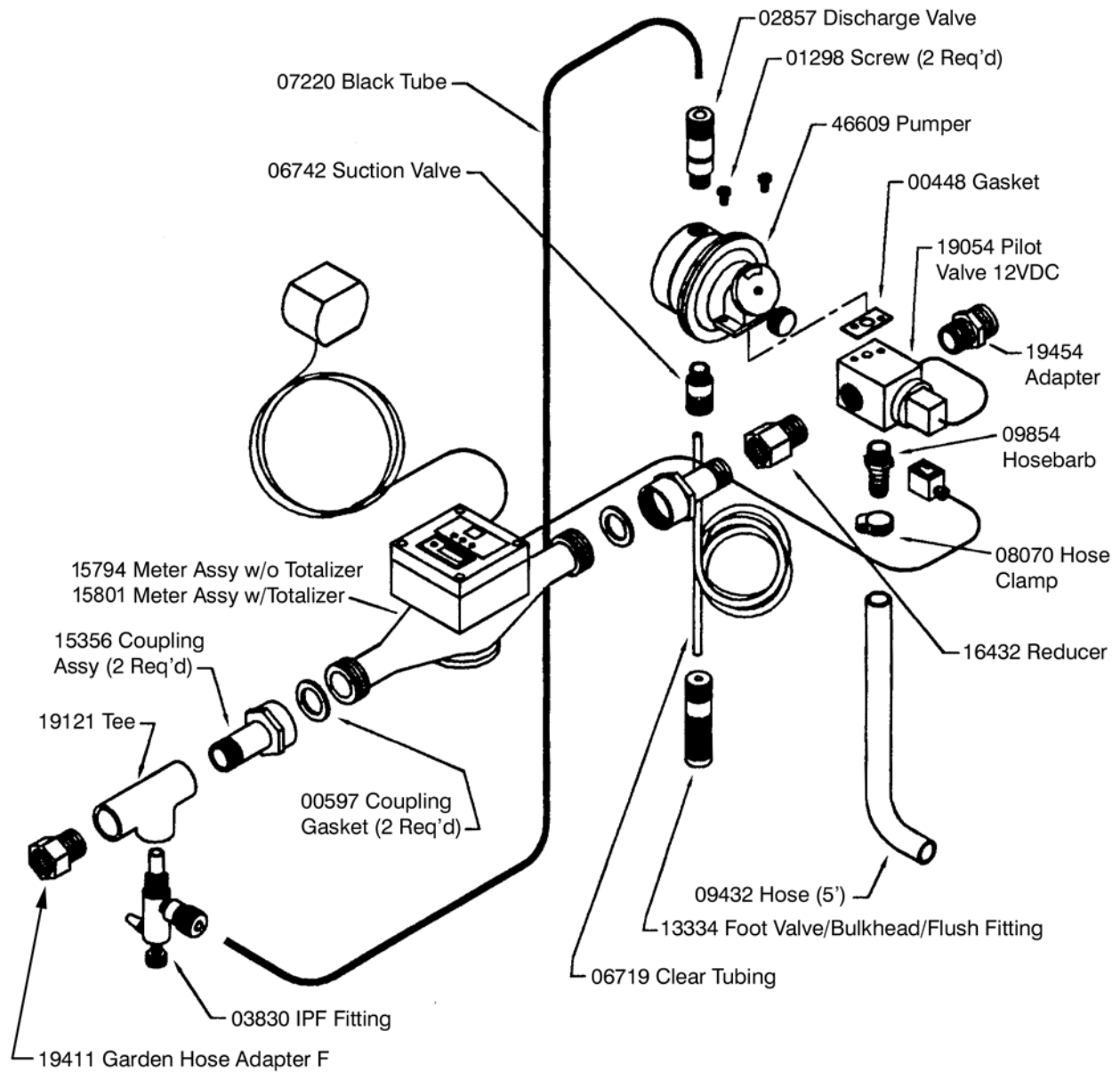
**Warning! Your medicator can be damaged if allowed to freeze. The warranty does not cover damage by freezing.**

You should take the necessary precautions to protect the medicator from freezing.

- If you remove your medicator from the line for the winter, you should drain the water from it.
- You should also remove the pumper from the pilot valve and drain the water from both pumper and pilot valve.

# Medi-Flow Complete

## Model M101 & M101D



# Medicator Flow Meters

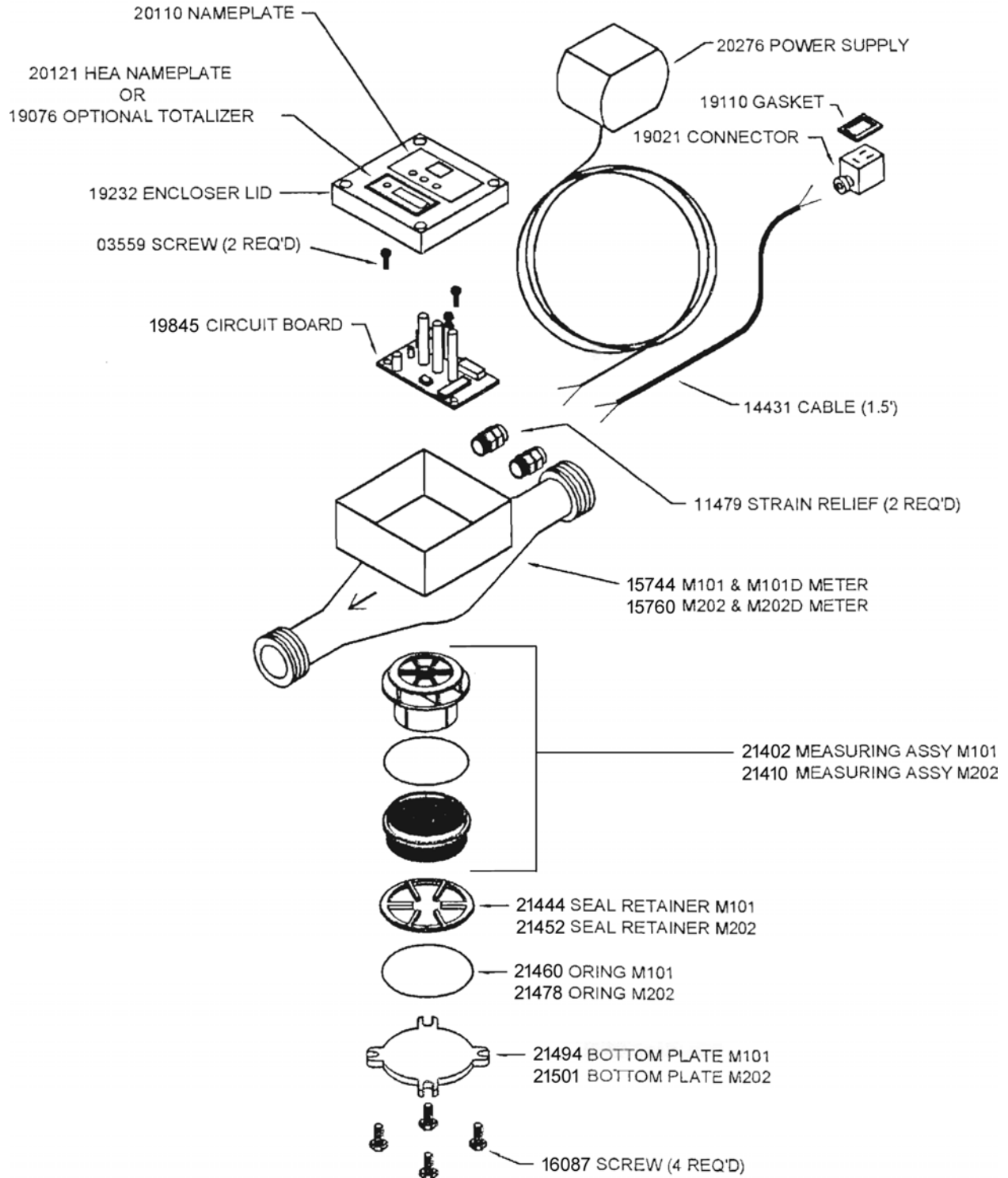
Part Numbers

M101= 15794

M101D= 15801

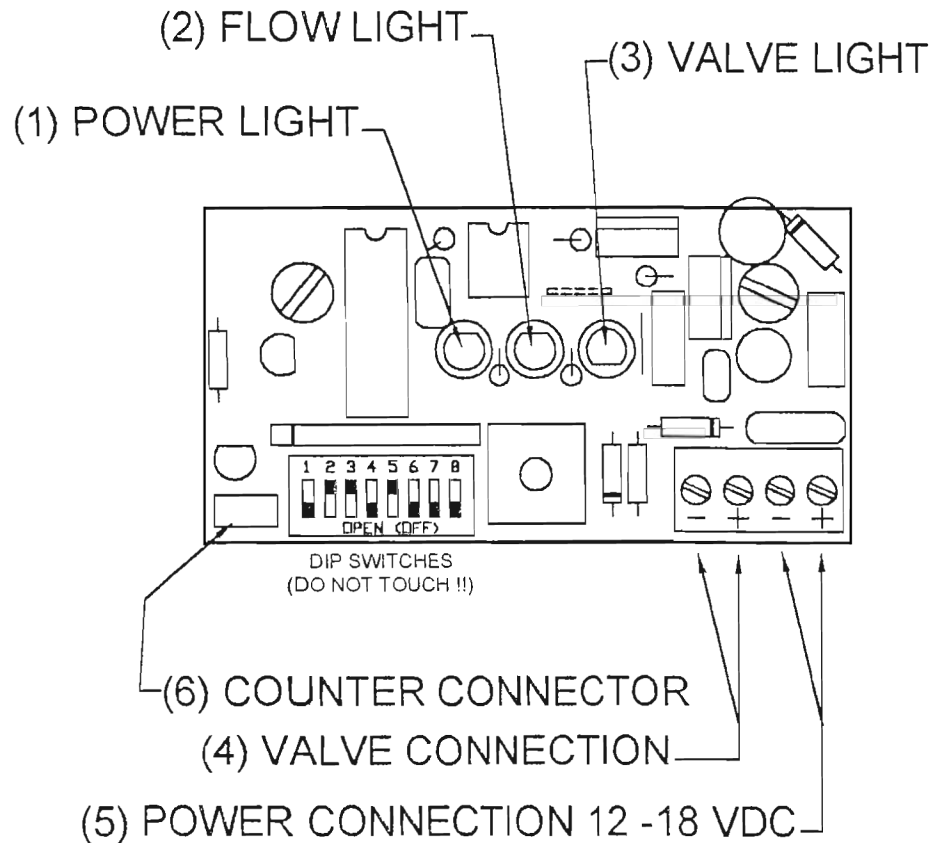
M202= 20305

M202D= 20313



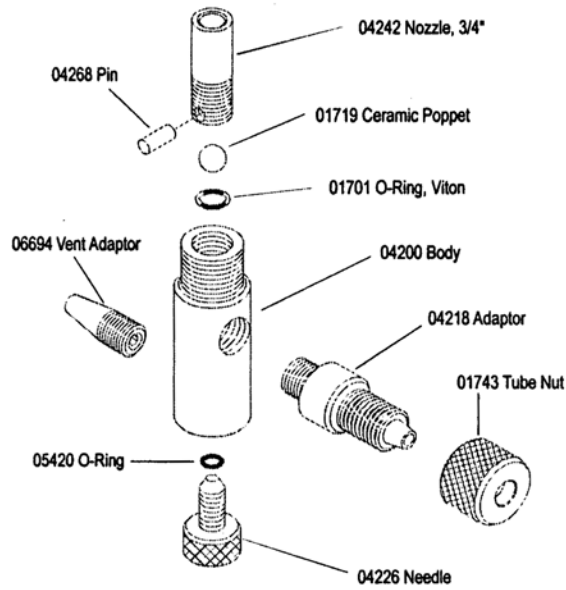
# 19845 PC Board

12 VOLT DC

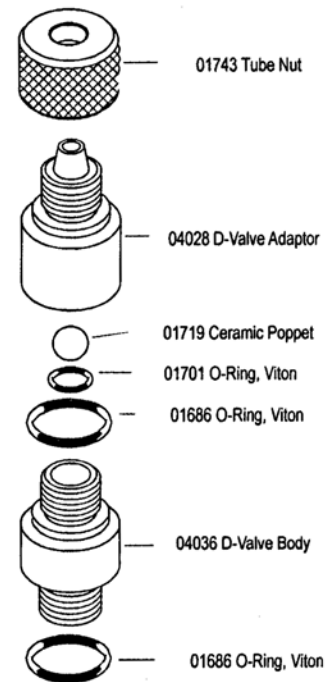


- (1) Power Light (RED) - This light will be lit when power is applied to the medicator.
- (2) Flow Light (YELLOW) - This light will flash/flicker when water is flowing, It may be on or off with no flow.
- (3) Valve Light (GREEN) - This light will turn on when the pilot valve is energized.
- (4) Valve Connection - Connect valve cable (p.n 14655) to this terminal (non-polarized).
- (5) Power Connection - Connect 12VDC to this terminal. **Be sure polarity is correct!**
- (6) Counter/Totalizer Connection (Optional) - Plug counter/totalizer to this connection)

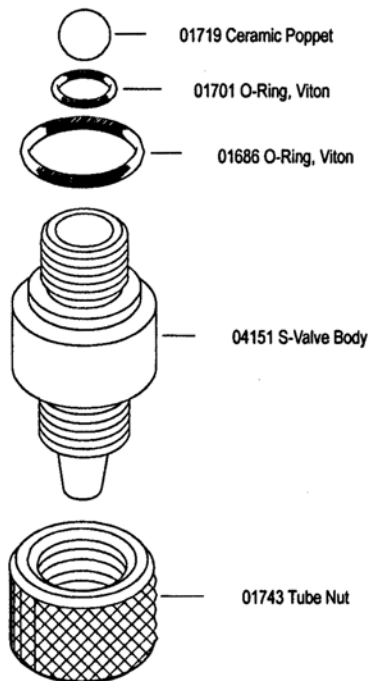
# Chemical Valves



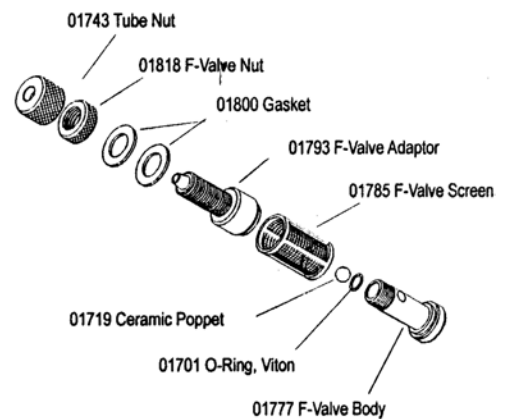
**03830 Priming Injector Complete**



**02857 Discharge Valve Complete**



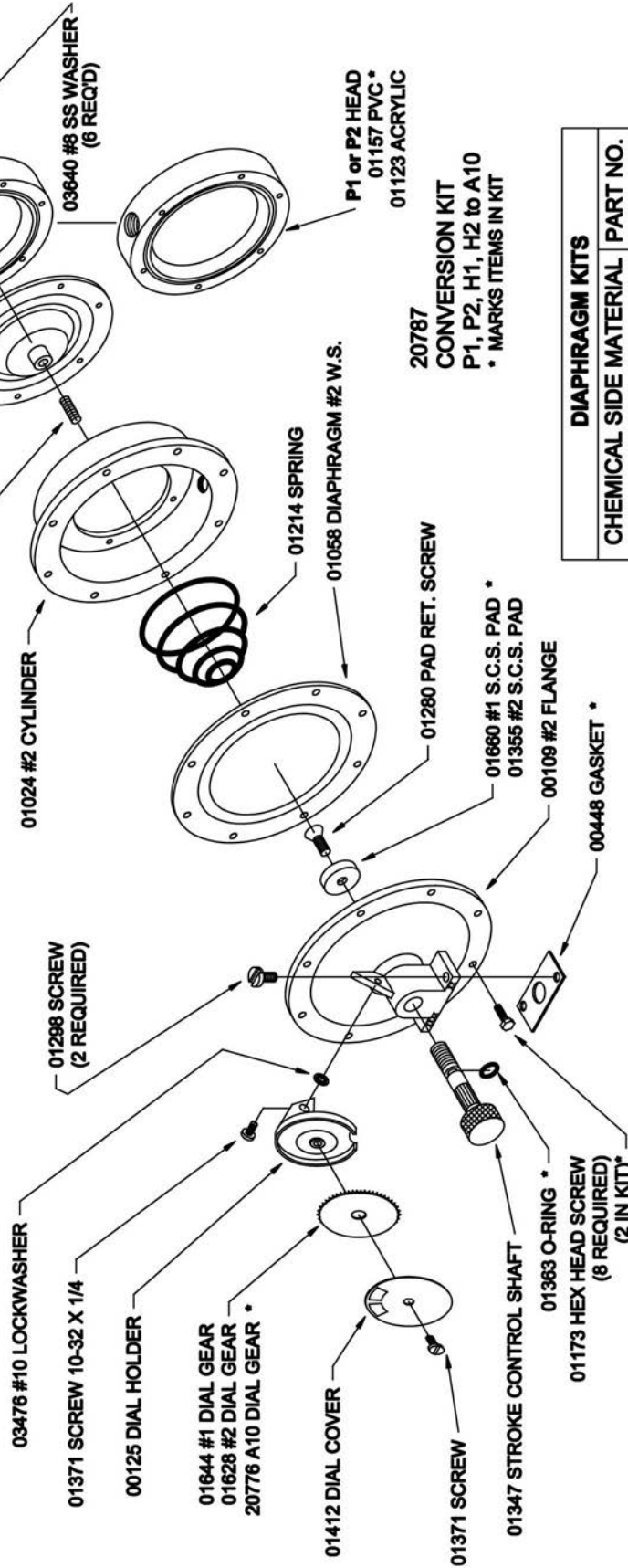
**06742 Suction Valve Complete**



**07288 Foot Valve Complete**

# HI, H2, P1, or P2 PUMPER ASSEMBLY LESS LIQUID END FITTINGS

For complete information on servicing the pumper, refer to HIGH CAPACITY PUMPER INSTRUCTIONS available on-line at <http://heanderson.com/manuals.php>



DIAPHRAGM KITS	
CHEMICAL SIDE MATERIAL	PART NO.
STANDARD (EPDM)	08913
VITON	08905
TEFLON FACED	20798

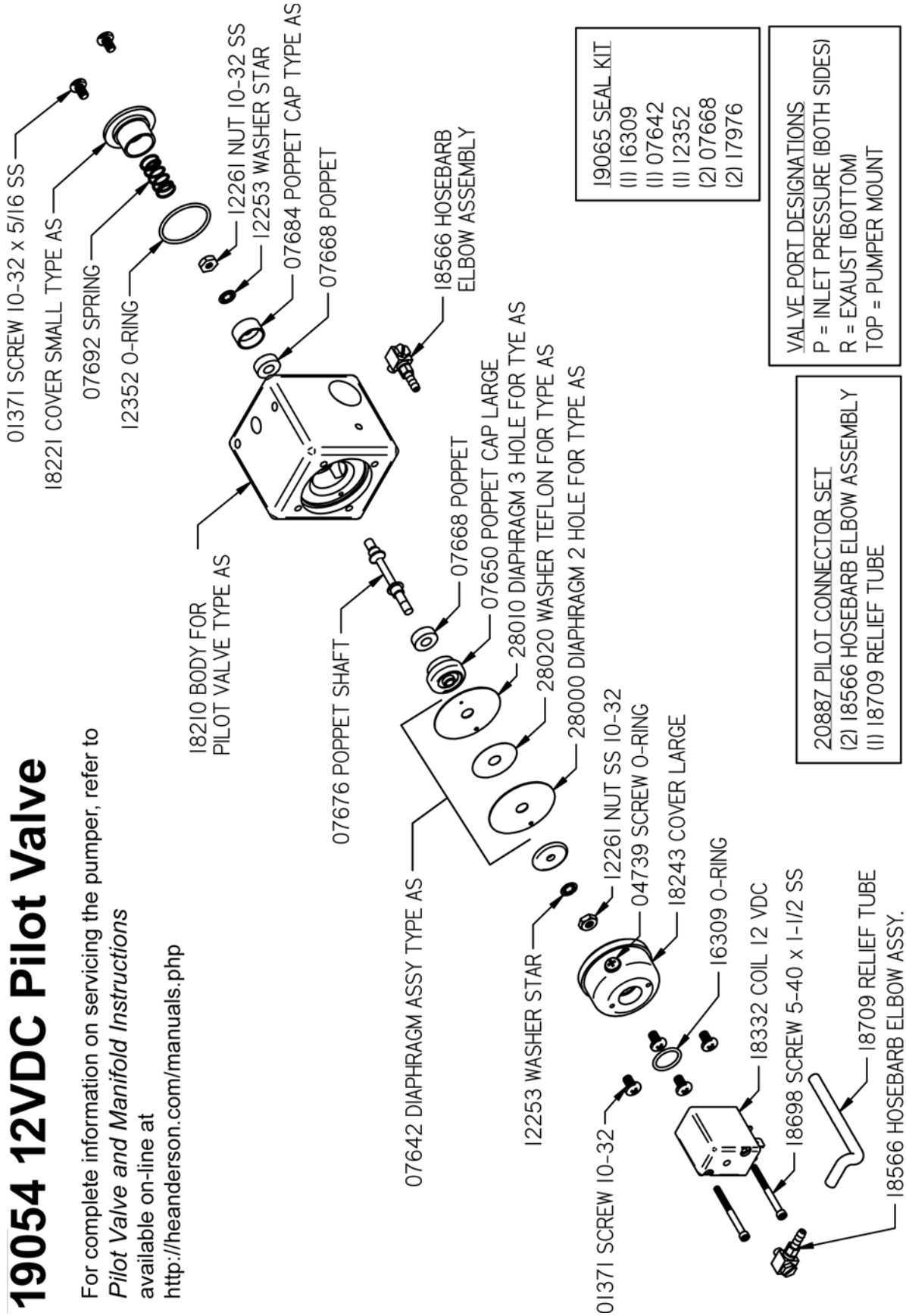
DIAPHRAGM KITS INCLUDE BOTH DIAPHRAGMS, STUD ALL O-RINGS, GASKETS AND 2 EACH EXTRA SCREWS

PUMPER COMPLETE (AS SHOWN ON THIS PAGE)			
	P1	H1	H2
STDIPVC	45510	45554	46054
STDIACR	45509	45543	46043



# 19054 12VDC Pilot Valve

For complete information on servicing the pumper, refer to *Pilot Valve and Manifold Instructions* available on-line at <http://heanderson.com/manuals.php>



## LIMITED WARRANTY

### WHAT IS COVERED

The H.E. Anderson Company of Muskogee, Oklahoma, will make any necessary repairs and/or replace any parts of any Ratio:Feeder® product made necessary because of defects in materials or workmanship for fifteen months from date of manufacture. Warranty repairs and/or replacements will be performed without charge to the owner by H.E. Anderson Company within a reasonable time after prepaid delivery of the defective product to the H.E. Anderson Company, 2100 Anderson Drive, Muskogee, Oklahoma 74403.

### WHAT IS NOT COVERED

This warranty specifically excludes failure of any parts or materials caused by chemical attack or damage caused by operation above rated capacity or pressure. Further, this warranty does not cover wear or failure caused by sand or other foreign materials which may be found in water that is passed through our products, or damage caused by freezing or exposure to water temperatures above 60°C (140°F).

This warranty does not cover damage caused by failure to follow prescribed installation instructions and limitations issued by H.E. Anderson Company. In addition, this warranty does not cover service adjustments, repairs, or replacements caused by misuse, negligence, alteration, accident, or lack of specified maintenance. This warranty does not cover damage to electronics from water, voltage spikes, or lightning strikes.

This warranty does not cover components used by, but not manufactured by H.E. Anderson Company, in the manufacture of our products except to the extent of said component manufacturer's warranty.

This warranty specifically excludes liability for consequential damages or for charges for labor or expense in making repairs or adjustments, or losses of time or inconvenience.

---

This warranty gives you specific legal rights and you may also have other legal rights which may vary from state to state. H.E. Anderson Company does not authorize any person to create for it any other obligation or liability in connection with these products. ANY IMPLIED WARRANTY APPLICABLE TO THESE PRODUCTS IS LIMITED TO THE DURATION OF THIS WARRANTY. H.E. Anderson Company shall not be liable for consequential damages resulting from breach of this written warranty.

NOTE: Some states do not allow limitation on how long an implied warranty will last or the exclusion of limitations of incidental or consequential damages, so the above limitations or exclusions may not apply to you.

---

### WHAT TO DO IF THERE IS A QUESTION REGARDING WARRANTY

- 1) Promptly notify the consumer adviser at H.E. Anderson Company by telephone at 800-331-9620 or 918-687-4426.
- 2) Confirm the report in writing (or via FAX at 918-682-3342) to the H.E. Anderson Company, stating the circumstances surrounding the problem.

### PURCHASER'S OBLIGATION

- 3) Purchaser must give H.E. Anderson Company immediate written notice on discovery of defect.
- 4) Purchaser must pay for shipment of the defective product to the H.E. Anderson Company, 2100 Anderson Drive, Muskogee, Oklahoma 74403.